

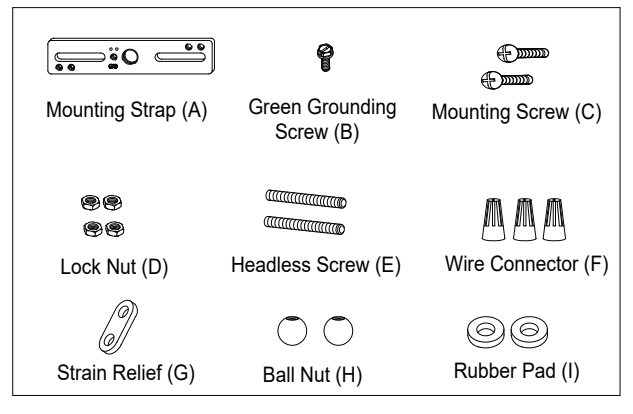
ASSEMBLY AND INSTALLATION INSTRUCTIONS

T0349 T0493

WARNING: TO AVOID RISK OF ELECTRICAL SHOCK, BE SURE TO SHUT OFF POWER BEFORE INSTALLING OR SERVICING THIS FIXTURE.

NOTES: 1. Before installing, consult local electrical codes for wiring and grounding requirements.
2. READ AND SAVE THESE INSTRUCTIONS.

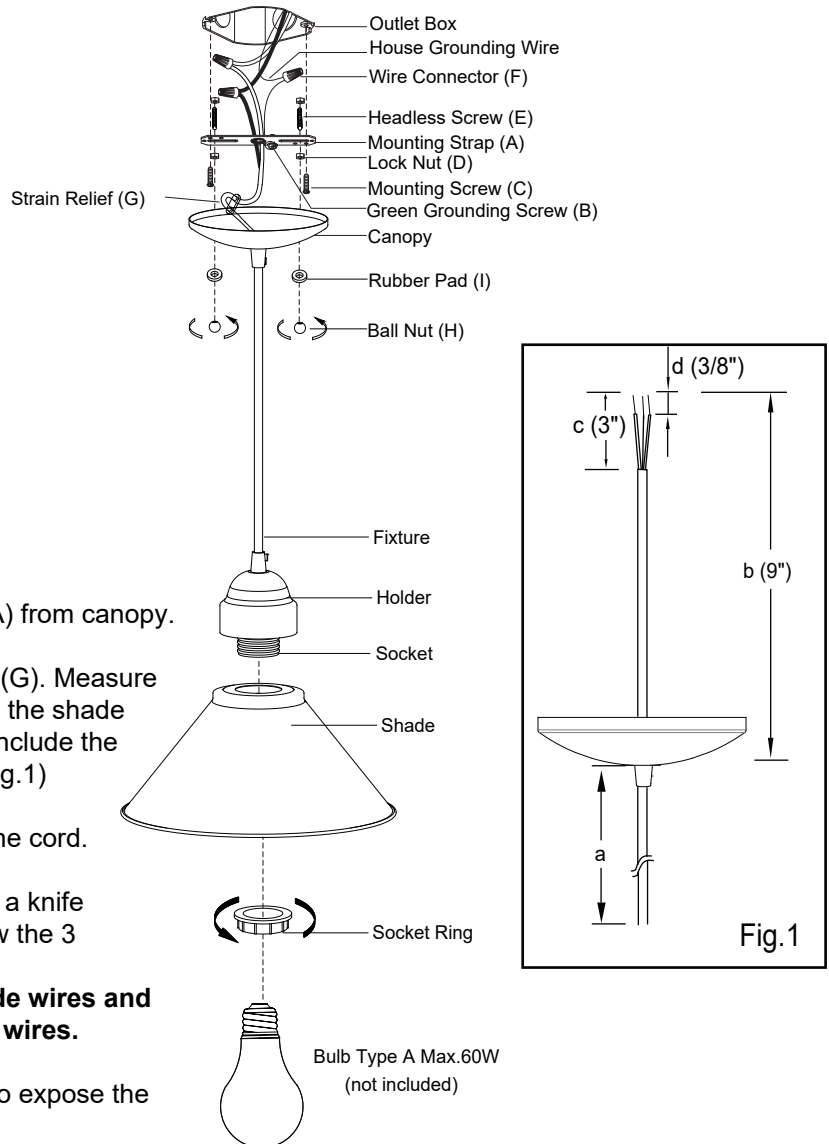
Hardware Package (included):



Installation Steps

Turn off the power at fuse or circuit box.

1. Unscrew two ball nuts (H), remove mounting strap (A) from canopy.
2. Thread the cord through the canopy and strain relief (G). Measure the desired length of the cord (a) from the canopy to the shade and leave additional 9" cord (b) above the canopy (include the canopy). Then cut off the unnecessary cord. (See Fig.1)
3. Adjust strain relief (G) at 9" position from the top of the cord.
4. Mark the 3" cord (c) from the top of the cord (b). Use a knife peel off the insulation of the cord (c) carefully to show the 3 inside wires out. (See Fig.1)
Caution : Cutting too deep may cut off three inside wires and destroy the insulation surface of the three inside wires.
5. Peel off the 3 wires from the top about 3/8" long (d) to expose the copper for wiring.
6. Attach the mounting strap (A) to outlet box by using two mounting screws (C).
7. Pull out the source wires from the outlet box. Make wire connections using wire connectors (F) as follow:
 - Connect the hot wire (usually black insulation) from the fixture to the black wire from the power source.
 - Connect the neutral wire (usually white insulation) from the fixture to the white wire from the power source.
 - Attach the fixture grounding wire (usually green insulation or bare wire) to the mounting strap with the green grounding screw (B). Then connect it to the house grounding wire with the wire connector (F). Carefully put the wires back into the outlet box.



8. Pull the cord (a) down slightly until the strain relief (G) touches the hex nut. Attach the canopy to the mounting strap (A) by inserting two headless screws (E), then secure it with two ball nuts (H) and two rubber pads (I).
Note: Adjust the strain relief can decrease or increase the length of cord exposing outside.

9. Attach shade to socket, then secure it with socket ring.

10. Install bulb (not included). See relamping label at socket area or packaging for maximum allowed wattage.

Turn on the power at fuse or circuit box.

The following parts are available for re-order if damaged or missing.

Spare Parts List:



Mounting Strap (A)



Green Grounding Screw (B)



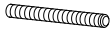
Mounting Screw (C)



Lock Nut (D)



Headless Screw (E)



Wire Connector (F)



Strain Relief (G)

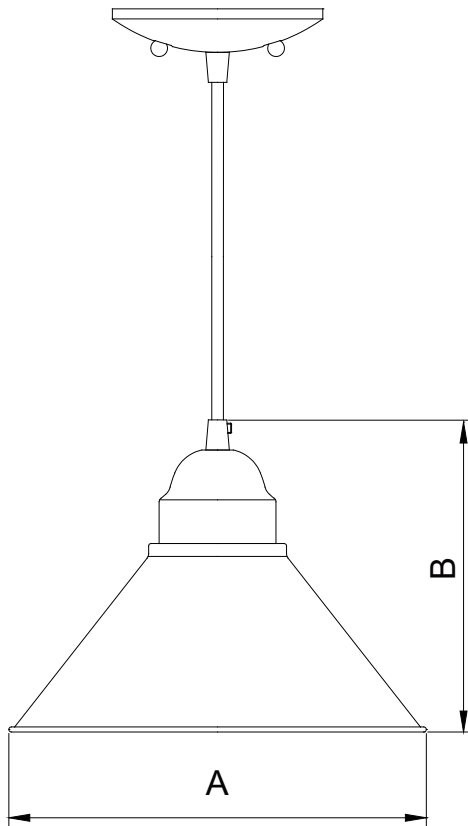


Ball Nut (H)



Rubber Pad (I)

Assembly Kit
5797MM (1 SET) for T0349
5992MM (1 SET) for T0493



A: 10"

B: 7-1/2"